



St. Luke's Lutheran Church
(916) 421-5039
www.slelca.org
stlukeschurch@att.net
Pastor Carl Hoppman
carlhoppman@gmail.com

News And Views



2017

Pastoral Perspective



This issue of the News and Views contains the 2016 annual reports of the leadership team of St. Luke's. We were very blessed during 2016 with a strong and dedicated group of leaders for our congregation. As you will read, they focused together on our congregational mission to "Spread the Good News, Serve those in need, and Share the victory of Jesus." It was a privilege to work with them on this mission.

Paul Maki, our congregational president, kept us on track through the year. Carolyn Andrews, our congregational treasurer, did a tremendous job in taking care of our finances. Karen Linfor, our congregational secretary, kept very clear minutes and records for us. Jack Fenske, our financial secretary, watched carefully over the records of our financial giving. Ron Webb, our special funds recorder, did wonderfully at keeping our many special funds in order. Larry Dockter, our vice-president, was supportive of our president and other officers in their work.

The Christian Education Board didn't have a chair in 2016, but continued none-the-less to provide an excellent Sunday School for our children, led by dedicated parents and others. I was privileged to support the work of the Board with Confirmation and adult classes. The Confirmation class of 2016

included Isabella Basquez, Hannah Encinas, Morgan Furry, Amber Mansfield, Angie Martinez, and Elizabeth Wilson. In the adult class, held on Sunday and Tuesday mornings, I led an in-depth study of the Psalms.

The Community Concerns Board, with Al Moser as chair, was on fire in 2016. In addition to the Winter Sanctuary overnight for 100 homeless folks and other exciting caring ministries, the Board sponsored a shoe give-away at Charles Mack Elementary School, providing new shoes for almost 200 students. It was exciting to help with the ministry of this Board.

The Evangelism Board, under the capable leadership of Carole Vance, was hard at work throughout the year to make sure members and friends of St. Luke's were cared for in their life situations and that we were reaching out to our community with the inviting message of the Good News. I was involved with this Board, among other ways, by going out regularly with Board members on visits to members and friends of St. Luke's who were shut in or for some other reason and in need of care.

The Finance Board, with Dave Saxby as chair, watched over the financial ministry of our congregation. We were very blessed with faithful regular giving and some very special gifts.

The Property Board, with Kelly Boyer at the helm,

worked on many projects to maintain and upgrade our marvelous facility. This group includes some of the unsung heroes for our congregation. They put in many hours of loving labor to keep our church facility inviting and up to date. A special project with which I was involved during 2016 was the remodeling of the Narthex (church entryway). It looks fantastic and is now a beautiful entry to our sanctuary.

The Worship and Music Board, under the capable leadership of Peggy Moser, kept our worship life exciting and our music ministry moving forward during 2016. I was blessed to be involved by leading worship most Sundays. We were so blessed to continue to have Brooke Barr as our Music Director and Jane Fanucci as our organist. Both these music ministers bring tremendous dedication and powerful skills to our music ministry. They are inspired and inspiring leaders.

The Youth Board, with Kirsten Ireton as chair, not only kept our youth group together doing fun projects and activities, but also cared for the youth lovingly in their life situations. Kirsten gave generously of herself to make the youth know they are important and vital in our congregation. I was happily involved in most of the activities of the youth group.

I would be remiss if I didn't mention the powerful ministry of our Women's Group (W-ELCA), under the leadership of Holly Hoppman. This group, perhaps more than any other, focused essentially on "Serving those in Need." The caring projects and ministries of the Women's Group keep our congregation reaching out in love to folks at their points of need.

I want to say a special word of thanks to Lauren Orcutt, our office secretary, for her excellent work in the church office. She has a very positive and intelligent way of handling the demanding ministry of keeping our church humming.

It continues to be a great privilege to serve as your pastor. Although I am 66 years old now, I believe the Lord has some years left for me to help lead the ministry of St. Luke's. I thank you for all your loving support, not only for me, but also for Triss and Holly. I look forward to a powerful year of ministry together in 2017.

Spreading, Serving, and Sharing with You,
Pastor Carl

MESSAGE FROM THE PRESIDENT

St Luke's was living its mission in 2016!

Through the Power of the Holy Spirit, we Accept God's call to spread the Good News, Serve those in need, and Share the victory of Jesus Christ throughout the world.

As I reflect back over the last year, it has been great to see our congregation living and performing the mission of St. Luke's Lutheran Church. We started off the year with collecting over 120 lbs. of soup for our Soup-er Bowl food drive and providing meals and a warm place for members of our community to sleep as we participated in the Winter Sanctuary. Not to mention providing backpacks and shoes for school children in our local neighborhood. Events like these are how we help spread the Good News and serve those in need!

Our boards and their committees were also very busy serving the church and it's needs. The Property Board, along with Evangelism Board, worked together allowing our Church to have a beautifully remodeled Narthex. This was a much-needed project now allowing a very warm and welcoming entrance in to our church. This remodel was made possible by memorials that helped fund this project and also provided the beautiful stained glass windows that were incorporated as part of the remodel. The church was also blessed to have a donation from the Connell family that provided funding for a new fence and gate on the west side of the Church.

Because of this gracious gift our church and its property are now more protected and secure.

As I look ahead to the new year, I am looking forward to working with the congregation and council to address the needs of the Church, especially working with the Evangelism Board on how we can better reach out to the local community to grow our current ministry. Pastor Carl and I will be meeting to begin to formulate what the next steps will be in this process. Meanwhile, I would welcome hearing your ideas on how we can keep our ministry welcoming and meaningful for our community and congregation.

Remember, you are loved.

Paul Maki

2017 Board Chairs



Let us welcome our new 2016 board chairs!

Faith Thomas, Community Concerns
Samantha Basquez and Laura Tice, SLY
Lauren Orcutt, Christian Education

The following people will continue in their current roles:

Paul Maki, President
Holly Hoppman, W-ELCA
David Saxby, Finance
Karen Linfor, Council Secretary
Carolyn Andrews, Treasurer
Larry Dockter, Vice President
Carole Vance, Evangelism
Peggy Moser, Worship & Music
Kelly Boyer, Property

Many thanks to all of you for serving our congregation in such crucial ways.

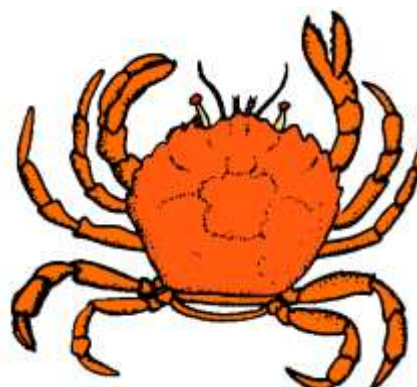
Events and Announcements

CRAB FEED

Thank you to everyone who supported the 2016 Crab Feed. We were able to raise just over \$8400 to support ministries here at St. Luke's.

We hope you join us for the 16th Annual Crab Feed on Saturday, March 4th, 2017. It's a pirate theme this year! If you need tickets or you are interested in being involved in any way, please contact Holly Hoppman, Committee Chair.

<http://slclca.org/events/event/st-lukes-crab-feed/>





W-ELCA VALENTINE'S DAY CELEBRATION

If you are interested in getting involved in 2016, at our next gathering we will be celebrating Valentine's Day on Saturday, February 11th, with lunch, games, and prizes! Bring a quiche or salad to share. This meeting, our mission support collection will go to support a service project we'll be doing following the celebration to support Winter Sanctuary. So please bring any of the following items: band aids; cotton balls; Q-tips; tooth brushes; floss picks; body wash; mouth wash; shampoo; lotion; soap; toothpaste; hand wipes; bottles of water; hard wrapped candies; packets of nuts; instant coffee; cheese and crackers; peanut butter and crackers; raisins; or any single-packet snacks. We'll see you in February!



LENT BEGINS MARCH 1

Lent will begin on Wednesday, March 1, with a soup supper, followed by Ash Wednesday Holy Communion. Throughout the Lenten season, we will have a weekly soup supper, followed by a brief service. Family devotional material and Lenten coin folders will be available in later February.



MEMBERS NEEDED FOR THE CHRISTIAN EDUCATION BOARD

The Christian Education Board hasn't had a chairperson for several years—until now! As I'm building this new board from the ground up, I will need some new members to help support this important ministry. We don't have too much work to do, since Sunday School, Confirmation, and adult Bible classes are already running smoothly. But we need a few people to help with planning, keeping tabs on things, and sharing ideas. This board also oversees the nursery; at this point, we don't have a nursery program, because we don't have too many little kids, but I would be happy to hear any ideas.

If you join the board, you'll just need to attend our monthly meetings. If any projects come up that require extra work, you can volunteer as you feel able to.

Let me know if you're interested in joining or if you have any questions!

Lauren Orcutt
Christian Education Board Chair

Deaths

We extend our deepest sympathy to Karen Linfor and her family at the death of her daughter, Tracy Light. Tracy was taken by her Lord Jesus to the heavenly kingdom after a valiant battle with cancer. She truly reflected the light of the Lord here, and now shines brightly in heaven for eternity.

We extend our sympathies to Dave Barr and his family as they mourn the death of his father, Dave Barr Sr.

Thank You

I wish to thank all of my friends at St. Luke's for their prayers, phone calls, and cards at the loss of my son, Bradley. And especially Pastor Carl, for his prayers and support during such a difficult time.

Thank you all,
Adeline Weston and family

My sincere thanks and gratitude to all who have expressed their kindness in so many ways; cards, phone calls, and flowers, as I work my through the grieving process at the loss of my beautiful daughter, Tracy Light.

Tracy loved her St. Luke's church family, and enjoyed participating in various activities during the time she, Ken, and Katie lived in Sacramento. May God continue to bless my wonderful church family.

In His love,
Karen Linfor

Thanks again for all my brothers' and sisters' love. Tracy's going home celebration was at Good Shepherd Lutheran on Whitestone in Cedar Park, Texas, January 14th, at 11:00 a.m. Please, send any flowers and such to our home address at 451 Twisted Oaks Lane, Buda, Texas, 78610. "If that same Spirit that raised Christ from the dead dwells in us, He shall quicken our mortal bodies."

St. Luke's,

I want to take this opportunity to sincerely thank you for your work and involvement in the 12th Annual Share-A-Sole Program.

As a result of your significant efforts, 2,750 elementary students in 14 Elk Grove Unified School District schools received much-needed shoes. Certainly without your dedication and support to our students, this would not have been possible.

Again, thank you for your time, considerable efforts and commitment to our students and to our communities.

Sincerely,

Donna Cherry
Associate Superintendent
PreK-6 Education
Elk Grove Unified School District



2016 Reports

PROPERTY BOARD

The St. Luke's Bylaws states that the Property Board (P.B.) is responsible for the "general custodial management of this congregation's property and facilities." The funds to fulfill these responsibilities are received from the General Budget and the P.B. Special Funds. The Special Funds moneys are obtained solely from the annual Crab Feed and Fireworks Booth fund raiser events. Your support for these events is greatly appreciated. Thank you.

In addition to the routine maintenance activities, the P.B. completed the following noteworthy efforts.

General:

- a. Early in 2016, the P.B. proposed a Continuing Resolution to the Council, regarding the expenditures of the net incomes from the Crab Feed, Fireworks Booth, and Luau. Ultimately, the Resolution was approved by the Council with relatively minor, but significant, revisions. The approved Continuing Resolution clarifies and establishes policies for the expenditures of the fundraisers' proceeds.
- b. Conducted an All Members Work Day on two Saturday mornings, during which minor maintenance tasks were accomplished. This year, the participation was disappointing.
- c. Deposited money into the Parking Lot Reserve account for resealing the parking lot on a scheduled basis; \$2,000. Current plans are to reseal and restripe the parking lot during the summer of 2017.
- d. In April, after several disappointing incidents, employed a new landscape contractor – Kevin Robertson. The P.B. thanks Al Moser for his as-

sistance in locating Kevin.

- e. Negotiated and executed a revised Contract for Landscape Services with Kevin. The revised contract became effective January 1, 2017.
- f. Voted "yes" on an election, by the Sacramento Area Flood Control Agency, to establish new flood control assessment rates. The annual rate will increase \$288.64 for St. Luke's and are necessary to provide improved flood protection.

Maintenance:

- a. Painted the Office restroom. Funds are approved to renovate this restroom, as time permits – a DIY project.
- b. Replaced an exterior lighting fixture; \$123.
- c. Replaced a leaky urinal valve; \$135.
- d. Hired a firm to spray for pests on four occasions; \$185, \$175, \$250 (bees), and \$175.
- e. Replaced the smoke/carbon-monoxide alarm in the Office; \$109.
- f. Hired a firm with a trailer-mounted pressure washer to clean the brick courtyard and walkway adjacent to the sanctuary; \$350.
- g. Directed the janitorial contractor to strip and wax selected vinyl tile floors; \$927.
- h. Hired Superior Energy to repair the Schultz Hall air conditioner; about \$125.
- i. As required annually, ensured that the Fire Department inspected the facilities (\$135) and that the fire extinguishers were serviced (\$130).
- j. Hired Superior Energy to repair the Office air conditioner; about \$125. The disconnect switch was stolen.
- k. Employed APS Environmental to clean the parking lot storm drain line, using high-pressure water jetting; \$1,060.

Improvements:

- a. Assisted the Evangelism Board in completing the Narthex remodeling project. The primary responsibilities of the P.B. were to provide planning assistance, manage the electrical contract (\$1,215), manage the construction contract (\$3,460), construct the table (\$773) and flower chart (\$176), procure the cabinet (\$459), and install the name tag board (\$221). All required funds were provided by memorial gifts.
- b. Thanks to the generosity of the Connells, employed Linmoore Fencing to construct a wrought iron fence and gate across the north driveway and vacant property. The fence was financed entirely by the Connell Construction Company – thank you Jennifer and Phillip.
- c. Hired S & G Carpet to replace the carpet in the Office and Schultz Hall Addition; \$4,411. The work was coordinated with the Narthex remodeling project.
- d. Hired a carpenter to replace two wood doors, at the south end of the Sanctuary building, with steel doors; \$1,912.
- e. Located a firm that could cast bronze strips for the original memorial plaque and, subsequently, procured two strips. Funds were provided by memorial gifts.
- f. Hired Cal Vintage Roofing to replace the roof on the Multiple-Purpose Room shed. Cal Vintage also replaced the gutters on the Schultz Hall Addition. Total cost was \$1,272.
- g. Installed a magnetic board in the Schultz Hall Addition conference room. There was no cost for the board, but installation was \$109. The board was originally purchased for the Narthex, but received minor damage in shipment.
- h. Constructed two large carts for the use in Schultz Hall for the new table covers and other bulky items. Funds for the carts were provided by memorial gifts.
- i. Hired a firm to install gutter guards for the Overflow Room (east side) and the Office (south and north sides); \$1,215.

- j. Hired Superior Energy to replace all electrical receptacles in the Education Wing with tamper-resistant, grounded receptacles; \$550.

Closing:

The past year was a busy year for the P.B., but much was accomplished. The Board and St. Luke's were exceedingly blessed. The P.B. greatly appreciated the support received throughout the year. Thank you.

The P.B. members in 2016 were Kelly Boyer, Jerry Carney, Jack Fenske, Ed Ireton, Bruce Kiser, and Clarence Korhonen. On St. Luke's behalf, I thank the Board members for their dedication and hours of devoted work.

St. Luke's Property Board,
Chairperson Kelly Boyer



ST. LUKE'S YOUTH

What a blessing it has been to be the leader of this fabulous group of young people this past year. We did a lot of great things again this year and I know they will continue to flourish under the guidance of Laura Tice and Samantha Basquez as their new leaders. I did want to give a special note of thanks to Ken Lentsch; he has been the SLY Treasurer for many years, serving the youth unnoticed, balancing

our books and making sure we are taken care of. He and Debi also come to SLY events and help out whenever they can; they are such blessings and deserve a big thank you!

We started 2016 off with a big planning meeting in January and then in February we got right to it, making Valentine's Day cards for shut-ins. We then helped out again with the Winter Sanctuary by making 100 sack lunches for the homeless. In March, we helped out with the Crab Feed Bake Sale, once again manning the booth and also selling sodas. We had a great time also playing Laser Tag in March at LaserX on the 13th after Confirmation class. At the end of the month was Easter, and we once again helped fill and hide the Easter eggs for the annual Easter egg hunt at church.

The last weekend of April, a few of our Confirmation SLY members went to Mt. Cross with Sam Basquez for a great weekend of sharing and to mark the end of their Confirmation experience. A great time was had by all that attended. And then it finally happened! Confirmation!!! In May, Amber Mansfield, Angie Martinez, Elizabeth Wilson, Hannah Encinas, Isabella Basquez, and Morgan Furry confirmed their faith in Jesus Christ. They shared their wonderful faith journeys with everyone at church.

We had a pretty quiet summer for SLY. Although we tried to plan some things, vacations and life just got in our way. We got back together to help with the church-wide service project of filling the backpacks on August 7th, and some of the members were also able to join in the fun of the summer BBQ.

In November, SLY once again made pumpkin bread. We made 145 loaves this year. Thank you again for your generous donations! We ended our year with a sleepover (if you can call it that) and game night on December 16th. It was a lot of fun and a great way for Sam & Laura to get to interact with the group. We even got Kelly Boyer to stay the night

with us as well.

Thank you for continually supporting the SLY fundraisers (pumpkin bread and calendars) and for praying for the spiritual strength and guidance of the youth. We look forward to an awesome SLY year in 2017.

In Christ,
Kirsten Ireton



BOARD OF WORSHIP AND MUSIC

The 2016 Worship and Music Board was chaired by Peggy Moser. Mary Harris, Karen Linfor, Ben Briel, Janette Payne, and Triss Hoppman served as members, with Pastor Carl and Brooke Barr as ex-officio members.

Rosary Jensen, our long-time devoted choir librarian, retired in January of 2016. Rosary was presented with a gift and our heartfelt thanks for her many years of service. Barbara Manlapig agreed to be the new librarian. It was agreed that the anthems needed to be reorganized first, as they were stored in multiple file cabinets and boxes due to limited file space. With the help of Paul Maki, an additional lateral file was obtained for a very reasonable price. This allows for all the anthems to be filed in alphabetical order. Triss Hoppman, Karen Linfor and Janette Payne worked on this project throughout the year, and it is almost complete.

The rotating schedules for Communion Servers, Welcome Leaders, and Altar Care were implemented in 2016 and, for the most part, went well. There

is an ongoing need for more Altar Care volunteers. Several new people were recruited in 2016, including Ben Briel, Steven Lee, Dave Saxby, Lydia Toloy, and Kelly Boyer. Brenda Sulzmann filled in for Linda Olsen. There were some resignations of former Altar Care members in 2016 due to other commitments, health issues, or moves. Recruiting will continue in 2017. Our goal is to have 24 volunteers to minimize the number of times per year each person serves.

In February, the organ was repaired. All the work was covered under warranty. In recognition of Black History Month, Pastor delivered a special sermon discussing the accomplishments of two ELCA church leaders. The Board discussed the condition of the carpet in the chancel and choir room as well as the instability of portions of the communion rail. These matters were referred to the Property Board for future resolution.

Also in February, Janette Payne and Jack Fenske began designing a new flower chart for the narthex. The chart was completed in March and installed as part of the narthex project. It is dedicated to Katie Ramsey, our devoted flower lady for many years.

Lenten services began February 10 with Ash Wednesday Holy Communion. Weekly services were held after the Lenten soup suppers. Dramas were presented featuring Pastor Carl and others. The services and suppers were well attended. Lenten devotionals and coin folders were made available. The proceeds from the coin folders went to the Pastoral Assistance fund. Over \$600 was collected for that fund to be used for assistance to community members in need.

Holy week featured the usual activities with a cleaning day the Saturday before Palm Sunday, decorating with palms and Easter lilies and the beautiful living cross. As always, thank you to Bruce Kiser for providing the palms. Thank you also to Holly Hoppman and Rachel Kiser for decorating the cross and to everyone who purchased Easter lilies for

our Easter celebration.

Special music was presented on Mother's Day in May. The choir anthem was "ladies only" and Brooke led the men in singing "God Will Be Good to You" for the ladies at the end of the service. Altar Care training was presented May 14. There were 12 people in attendance. The final choir presentation of the season was May 29. The Veterans banners were displayed for Memorial Day.

The Adult Choir and Bell Choir were off for the summer, as were the acolytes. Special music was provided by Brooke, Jane, and various soloists. Altar Care workers filled in for the acolytes. Pastor Ron and Al Moser led worship May 29 and into mid-June while Pastor Carl was on vacation. The contemporary liturgy was begun June 10 and was used until Advent. Janette Payne resigned from the Board in June due to her move to Oregon. We miss you, Janette.

The Luau was held September 18. There were performances from the Bell Choir and the Adult Choirs. Jacob Wilson played his keyboard and Myron Jensen lead a sing-a-long on his ukulele. The menu was the same as in prior years, with Kalua pork and Hawaiian barbecued chicken. Pat Webb coordinated a very successful dessert auction. The event was attended by over 100 people. It was our most successful luau to date. Food was a bit tight as 20 more people came than were expected. In the future, we will prepare additional food and try to sell any leftovers.

The Choirs resumed in September. The Adult Choir presented weekly anthems and worked on the Christmas cantata. The Bell Choir performed several times in the fall. The Children's Choir also performed occasionally. With Daniel Encinas' enlistment in the army, Amber Mansfield took over the Acolyte training. Thank you to Daniel and Amber for their leadership of the acolytes. The Adult Choir presented "A Mighty Fortress" on Reformation Sunday and "The Battle Hymn of the Republic" on Vet-

erans Day. The Veterans banners were displayed. The women of the ELCA led worship for the annual Thankoffering service the Sunday before Thanksgiving, and the Bell Choir performed a new Thanksgiving piece, "Let All Things Now Living."

Sign-ups for Readers and Prayer Leaders went out in the fall. Barbara Manlapig agreed to continue to be the coordinator, set the schedule for these worship assistants, and reminders each week. Larry Dockter continued as coordinator for the ushers. Jeff Kiser faithfully filled the candles with oil each week.

The opportunity for the congregation to purchase poinsettias for Christmas in memory or honor of someone continued. Dave Saxby once again purchased a beautiful – and very huge – tree. Jack Fenske fixed the angel's wing on the large nativity so we were once again able to display it. Thank you, Jack. The Choir presented its annual Christmas Cantata on December 18, "Celebrate the Joy and Wonder of Christmas." The Children's Choir participated in the Cantata, and the Bell Choir performed a Call to Worship and Offertory.

Karen Linfor agreed to represent the Board on the Meyer Memorial Committee. Our priority is the carpeting in the sanctuary and repair of the communion rail.

Respectfully submitted,
Triss Hoppman for the Board of Worship and Music



EVANGELISM BOARD

Our year began with our annual January 6th Epiphany Breakfast and Service. Pastor Carl's message was about who the Wise Men were and where they came from and the part they placed in God's revealing of his son. We enjoyed great food and fellowship.

Ash Wednesday, February 10, began our Lenten soup suppers and services. W-ELCA hosted our first Lenten soup supper and we all shared in the Holy Communion worship service. Five more soup suppers (hosted by our boards, church council, and the congregation) and worship services followed. We enjoyed many delicious soups, breads, and desserts each Wednesday.

This year's Easter Breakfast was on March 27th and was chaired by Dave Davis, Eric Linblade, Dave's son Mason, and Mary Davis. We had a wonderful breakfast of crème brûlée French toast topped with pecans, a vegetable dish, two kinds of potatoes, scrambled eggs, and ham. We served over 150 for breakfast. The donations and offerings came to \$435.00. Thank you to everyone who helped with set-up, cooking, serving, and clean-up to make our Easter celebration so special.

We coordinated the Narthex Remodeling Project, and it was completed in May. It is now a much more welcoming place. The walls were painted and we got new carpet, a new magnetic board for the name tags, a new flower chart, a new opportunity table, and new stained glass windows. Our board wishes to thank the property board, Jack Fenske, Jerry Carney, Micki Fenske, and Janette Payne.

On June 19th, we celebrated all the special men in our congregation with a Pie and Ice Cream Social. In July, we provided our very popular annual Root Beer and Orange Soda Floats.

On August 20th, we had a wonderful Outreach

Luncheon at Logan's Roadhouse. The food and service was excellent, and we had 24 church members and friends attend.

To celebrate the beginning of our Sunday School and adult Bible Study classes in September, the board hosted the annual Congregational BBQ Picnic. Thanks to Ed and Kirsten Ireton for doing a great job cooking all the hamburgers and hot dogs and to everyone who brought salads to share. Thanks to everyone who helped with set up and clean up, making this event possible for all to enjoy.

On October 30, we celebrated the Reformation, our Lutheran Heritage, and our Personal Family Heritages. We all had some wonderful food. Pastor Carl showed a film about Martin Luther's life narrated by Rick Steves.

The Congregational Meeting and Potluck on December 11 was a great success. We had lots of great food and desserts. We want to thank W-ELCA for setting up the tables and the beautiful table decorations. Schultz Hall never looked more beautiful.

The board also continues with the after-service refreshments, visiting shut-ins, and our visitor's welcome gifts. Thank you to Pat Hamilton, who coordinates our Sunday Greeters. I would also like to thank everyone who has helped serve or has provided refreshments for after service. A special



thank you to Ron Webb for making the coffee each and every Sunday.

As you can see, we had a wonderful, busy year, and it would not have been possible without my blessed board: Pat Webb, Carolyn Andrews, Kelly Boyer, Pauline and Walt Arndt, Linda Olsen, and Joyce Jensen. I would also like to thank Pastor Carl for his love, support, and guidance this past year.

In Christ,
Carole Vance
Evangelism Board Chair

W-ELCA

The Women of the ELCA (W-ELCA) were blessed in many ways in 2016. Throughout the year, we had four general meetings (in January, April, September, and November). We celebrated Valentine's Day, Mother's Day, and Christmas with our traditional annual gatherings. We distributed over \$4500 for our 2015 benevolence to a variety of local, national, and international organizations.

Our biggest events each year are Mega Bunco and the Fall Festival. We had just over 100 people come together for a fiesta dinner and a fun evening of Mega Bunco in June. In October, we held our annual Fall Festival and Family Fun Day. We hosted many local vendors and community members for a day of yard sales, food, and sharing. At the end of the day, the Salvation Army brought a truck and we were able to donate all of the left over white elephant items.

One of the reasons I take such pride in leading this group is our mission support. We take different collections each month for local organizations that could use a variety of in-kind donations, from diapers, wipes, and baby food for Chicks in Crisis, to towels, pet food, and supplies for the Sacramento SPCA. This year we had the opportunity to participate in a couple of service projects. In February, we assembled tote bags of snacks and toiletries for the

group that was staying at the church overnight for the Winter Sanctuary. In August, we participated in the congregational service day, assembling collected school supplies in backpacks for 102 students attending Charles Mack Elementary or Parkway Elementary schools. Finally, for our Christmas collection in 2016, we adopted 4 families from Charles Mack Elementary school, just across the street, on the opposite side of Neilson Park. We collected 102 gifts and gift cards. Many thanks go out to the volunteers we had wrapping gifts after the annual meeting so we could get the gifts delivered to the families before Christmas. The families were very grateful for the support we were able to provide.

I want to thank everyone who made 2016 so successful for the Women of the ELCA. It is because of the generous support of so many this past year that we are able to donate over \$3000 in benevolence funds to organizations both locally and internationally. I am continuously impressed by the generosity of our congregation. The volunteers for our various events, the donors who give either monetarily or in-kind gifts, and those of you who were able to support us by attending any of our events, made a meaningful difference and we thank you!

If you are interested in getting involved in 2016, at our next gathering we will be celebrating Valentine's Day on Saturday, February 11th, with lunch, games, and prizes! Bring a quiche or salad to share. This meeting, our mission support collection will go to support a service project we'll be doing following the celebration to support Winter Sanctuary. So please bring any of the following items: band aids; cotton balls; Q-tips; tooth brushes; floss picks; body wash; mouth wash; shampoo; lotion; soap; toothpaste; hand wipes; bottles of water; hard wrapped candies; packets of nuts; instant coffee; cheese and crackers; peanut butter and crackers; raisins; or any single-packet snacks. We'll see you in February!

Thank you to everyone who supported W-ELCA in 2016, and we look forward to seeing you in 2017!

For more information about our upcoming activities, please see our website:
<http://slelca.org/living-mission/st-lukes-council/w-elca/>

Respectfully submitted,

Holly Hoppman
W-ELCA President





Given by:

February 5

Eric Linblade
In memory of his mom

Dave, Brooke, and Justin Barr
For Jesse's 4th birthday today!

February 12

Triss Hoppman
For Holly's birthday

February 19

Ron and Pat Webb
For Ron's birthday

Karen Linfor
In memory of Jerry

February 26

Jack and Micki Fenske
For their son Jim's birthday



Diane McDonald	February 1
Daniel Connell	February 3
LaRayna Osako-Cain	February 3
Jesse Barr	February 5
Daniel Encinas	February 7
Jesse Iniguez	February 7
John Mansfield	February 7
Holly Hoppman	February 10
Lacey King	February 10
Lindsay King	February 10
Brooklyn Moser	February 10
Debbie Silverberg	February 11
Kim Osako	February 12
Robin Zoesch	February 13
Ed Ireton	February 15
MaryAnn Janes	February 16
Eric Linblade	February 17
Andrew Encinas	February 18
Katy Etchison	February 19
Ron Webb	February 22
Lajuan Andrews	February 24
Megan Thomas	February 27
Cheryl Franklin	February 28



FINANCIAL SECRETARY REPORT

December & Year End Report - 2016

Comments:

- a. Annual statements of contributions for 2016 were distributed in January 2017. If you did not receive a statement and believe you should have, please contact me as noted below.
- b. The offerings for the month of December 2016 were considerably less than the December 2015 offerings. However, more importantly, the total for 2016 surpassed 2015. See next paragraph.
- c. The total General Fund contributions for 2016 increased slightly from 2015 (about \$4,000 or 2 percent) – a modest increase in the right direction.
- d. The total General Fund contributions for 2016 were slightly over the total amount budgeted in the annual Budget, which is remarkable income forecasting. Our compliments to the 2016 budget makers.
- e. The number of contributors was essentially flat when 2016 is compared to 2015.
- f. St. Luke's was blessed with numerous special contributions. Most noteworthy was an exceedingly large gift from Lee Meyer, an early member of St. Luke's. Also notable was the wrought iron fence that the Connells generously funded for St. Luke's. In addition, the Narthex remodeling project was funded entirely by various memorials, including the three beautiful stained glass windows. Don Miller's memorial was a major contributor to the Narthex project.
- g. I encourage all members to use numbered envelopes, if feasible. The use of numbered envelopes speeds up the Sunday counting process, makes record-keeping easier, and most importantly minimizes errors.
- h. When you need numbered envelopes, either contact me or drop a note in the offering.

If you have any questions or suggestions regarding the Financial Secretary's duties or reports, please do not hesitate to contact me.

Jack Fenske
 St. Luke's Financial Secretary
 916-714-3626
LRFenske@comcast.net

General Fund (only) Contributions - 2016		
Data	December	Total
Total Contributions	\$22,303	\$222,858
Compared to Budget	-\$3,650	\$1,045
	-14.1%	0.5%
Compared to 2015	-\$4,610	\$3,882
	-17.1%	1.8%
No. of Contributors		
2016	101	89 avg.
2015	99	90 avg.

Other Contributions - 2016		
	December	Total
Sunday School	\$30	\$326
Flowers	\$100	\$1,480
Special Gift	\$50	\$892
Poinsettias	\$450	\$630
Memorials	\$50	\$5,993
Lee Meyer Gifts	\$10,909	\$142,499
Wrought Iron Fence		\$6,135
Easter Lilies		\$490
Lenten Offerings		607
Thankofferings		\$1,591

WORSHIP ASSISTANTS

Altar Care

(8:15 a.m.) Cheryl Franklin
(10:30 a.m.)
Feb. 5 Lisa Olsen, Brenda Salzmann
Feb. 12 Carol Carney
Feb. 19 Connie Reule, Nancy Minning
Feb. 26 Dave Saxby

Communion Servers

Feb. 5 Betty Englund, Ken Lentsch,
Linda Duffek
Feb. 19 Peggy Moser, Connie Reule,
Bob Behr

Counters

Feb. 5 Nancy Minning, Connie Reule
Feb. 12 Don Schell, Bob Behr
Feb. 19 Betty Englund, Barbara Manlapig
Feb. 26 Holly Hoppman, Marlene Kiser

Greeters

Feb. 5 *Needed*
Feb. 12 Gail Weber
Feb. 19 Ireton Family
Feb. 26 Jan Tanaka

Head Ushers

8:15 a.m. Ron Franklin
10:30 a.m. Craig Eckels

Prayer Leaders

Feb. 5 Faith Thomas
Feb. 12 Bob Behr
Feb. 19 Pat Webb
Feb. 26 Alison Thomas

Psalm Leaders

Feb. 5 Angie Martinez
Feb. 12 Lucy Orcutt
Feb. 19 Aiyana Tice
Feb. 26 Sierra Etchison

Readers (8:15 a.m.; 10:30 a.m.)

Feb. 5 Lydia Toloy; Holly Hoppman
Feb. 12 Ron Webb; John Orcutt
Feb. 19 Christiana Wilson; Marlene Kiser
Feb. 26 Eric Linblade; Kelly Boyer

Refreshments

Feb. 5 Carol Carney, Ofelia Ojeda
Feb. 12 Paul and Sande Heaton
Feb. 19 Mack and Carole Vance
Feb. 26 Linda Olsen, Joyce Jensen

Visitors' Gifts

Feb. 5 Pat Webb
Feb. 12 Carole Vance
Feb. 19 Joyce Jensen
Feb. 26 Carole Vance

Acolytes

Feb. 5 Darnell Osako, LaRayna Osako-Cain
Feb. 12 Aiyana Tice, Lily Neidich
Feb. 19 Amber Mansfield, Angie Martinez
Feb. 26 Lucy Orcutt, Kimiya Ricciardi

Welcome Leaders

Feb. 5 Al Moser
Feb. 12 Carol Edwards
Feb. 19 Paul Edwards
Feb. 26 Kelly Boyer

Sunday School Teachers

Feb. 5 Lauren Orcutt, Christina Hisamoto
Feb. 12 Laura Tice, Samantha Basquez
Feb. 19 Alison Thomas, Lajuan Andrews
Feb. 26 Samantha Basquez, Laura Tice



St. Luke's Lutheran Church
7595 Center Parkway
Sacramento, CA 95823

Return Service Requested

**Non-Profit Org.
U.S. Postage Paid
Permit No. 739
Sacramento, CA**



Ash Wednesday Holy Communion
is March 1st,
marking the beginning of the Lenten season

