



St. Luke's Lutheran Church
(916) 421-5039
www.slelca.org
stlukeschurch@att.net
Pastor Carl Hoppman
carlhoppman@gmail.com

News And Views



2017

Pastoral Perspective



Ever felt like you were left hanging? Perhaps you have been left hanging by a broken relationship. For whatever reasons, rather than the flow of love, there is the barrier of unconcern or abuse. Rather than feeling uplifted and supported, you feel torn down

and alone. How can you deal with it? It is frightening. What can you hang on to? Perhaps you have been left hanging by a challenging health situation. Your body isn't working like you want it to or you feel like it is falling apart. How can you deal with it? It is frightening. What can you hang on to? Perhaps you are without an adequate job or financial resources. You are worried about what will happen to you and your family. How can you deal with it? It is frightening. What can you hang on to? Perhaps you have been left hanging by the death of a loved one. The one for whom you have cared so much and to whom you have become so attached has passed away. How can you deal with it? It is frightening. What can you hang on to?

Those who had been following Jesus certainly felt like they were left hanging by His death. All that seemed left was for the women to go to the tomb and anoint Jesus' body. How could they deal with it? What did they have to hang on to? The answer came to them from a messenger from heaven at Jesus' empty tomb. The messenger told them that

Jesus was not there because He had risen! What they had to hang on to, then, was His resurrection. That news caused them to be bewildered. The news was so overwhelming. And yet that's what they were given to hang on to. Soon they experienced the risen Lord Jesus' presence and they became witnesses to His resurrection. Life was never the same for them. They realized that, in the resurrection, they had something to hang on to that held fast over against all the power of sin and Satan and even death itself.

Perhaps you are bewildered by the news of the resurrection of Jesus. It is so overwhelming. But in it you have something to hang on to that will see you through any situation where you are left hanging. Realizing that this news and the presence of the living Lord Jesus is yours, life is never the same for you. Hanging on to the resurrection puts you in a new reality where victory and new life are assured. For the broken relationship where there are so many barriers and no love flowing—the resurrection means you need not be sucked into an abyss, but are given new life where love can flow again and your attitudes be healed for new relationships. You can hang on to that. For the challenging health situation—the resurrection means that new life has been won for you. Health challenges can't overcome you. They will be resolved in the Lord's healing power. You can hang on to that. For the difficult financial situation—the resurrection means your tomorrows are wrapped

in the Lord's love and care and you are free to live today trusting He will provide for tomorrow. You can hang on to that. For the dark grief because someone dear has died—the resurrection means that Jesus has brought new life for your loved one and for you. The love that you have shared never dies. The light of the risen Lord Jesus is shining on you both and He is tenderly caring for you. You can hang on to that.

In all situations, someone has you by the hand and the heart from here to all eternity. He will never let you go. He has won victory for you. You will never be defeated. Hang on to the resurrection. There is nothing more secure or life-giving. Share the resurrection news with others that they, too, would hang on for life.

Spreading, Serving, and Sharing with You,
Pastor Carl



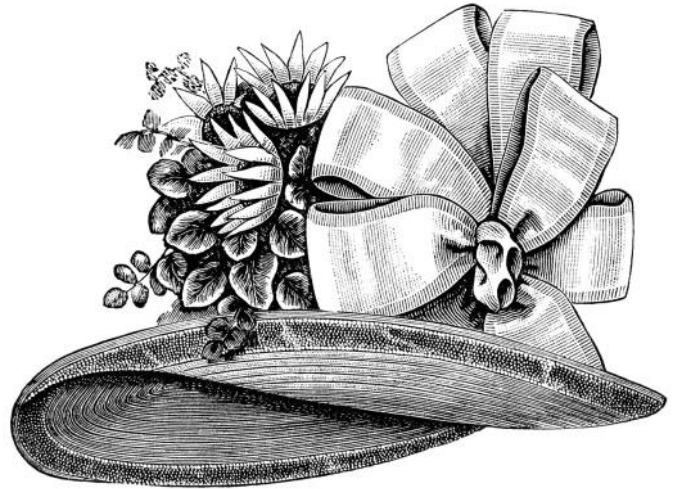
Beautiful Easter Cross by Rachel Kiser & Holly Hoppman



Mother's Day

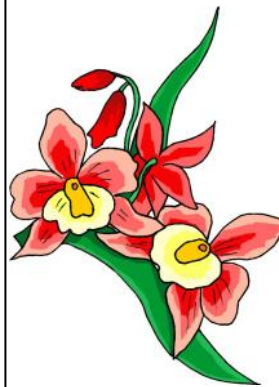
ANNUAL MOTHER'S DAY LUNCHEON

In May, W-ELCA is hosting the Annual Mother's Day Luncheon on Saturday, May 13th, at 11:30a.m. You are invited to join us, bring guests, and wear your favorite hat to celebrate mother's day! We are requesting that if you are interested in attending, to purchase a ticket for \$1 per person. We are having a catered lunch from Logan's Roadhouse and need an accurate headcount. The last Sunday to purchase tickets will be May 7th. At the Mother's Day Luncheon we will collect NEW undergarments for women and youth served by Saint John's Program for Real Change. Saint John's Program for Real Change provides vital mental health services, supportive services, career education, on-the-job training, and respite Services to women and children living in crisis. For more information about the Program for Real Change, I would encourage you to visit their website at: <http://saintjohnsprogram.org/program>.



WEAR A HAT FOR MOTHER'S DAY

Sunday, May 14, is Mother's Day. The women of the congregation are invited to wear hats that day in celebration of the day. Bring your mothers, grandmothers, daughters, grand-daughters, aunts, nieces and other special women in your life to church to be honored on this special day. The bell choir will perform at the service.



TO COMMEMORATE A SPECIAL DAY ...

Sign up to provide flowers for worship.

The flower chart is in the narthex. Select the date, write in your name and the name of the person you want to remember, the event, or to the Glory of God. The flowers will be ordered for you for the selected date and delivered by the florist.

You may take your flowers after worship. Please pick them up in the Altar Guild room (behind the choir loft) at the conclusion of the 10:30 service. If

you prefer to have your flowers taken to members or friends of the congregation who are sick or shut-in, leave them and they will be taken to the church office for delivery the following week.



The cost is \$20.00. The Board of Worship and Music will send you a reminder before the date you have chosen. The reminder will include an envelope you may use to make your payment.

W-ELCA

In April, the Woman of the ELCA hosted a luncheon for everyone in attendance of the All Members Work Day . Following the meal, they heard from Inez, the chick-in-charge at Chicks in Crisis! Inez talked about the work being done with the youth and families Chicks in Crisis serves.



BUNCO

Mark your calendars and save the date for this year's BUNCO event on Saturday June 3rd, at 6pm. Keep an eye out for ticket sales starting soon!

YOUTH GROUP

The youth group had a very busy March! We had the Crab feed at the beginning of the month and Winter Sanctuary toward the end. Special thanks to Jennifer Connell and everyone else who donated lunch items for the 100 sack lunches we made up for our guests! The kids did a wonderful job on the assembly line and got the job done quickly and efficiently! Great job by all. :)



We started out the month of April with the annual church clean up day. Several of the youth helped with cleaning up the trash around the building and Isa and Aiyana cleaned the fountain in the courtyard.

We also began taking donations for the Easter egg hunt, and boy did the congregation provide for us yet again! We filled over 600 eggs for the kids! Thank you so much for your generous donations! We will continue the month with a Youth Group meeting and continue to form a plan for the Youth loft.

Laura Tice
Youth Board Chair

EASTER BREAKFAST

We had a wonderful Easter Breakfast. We want to thank Dave Davis, Mary Davis, Eric Linblade and Carol Carney for the delicious maple french toast and blueberry cream cheese french toast with blueberry compote. They also made wonderful



potato casserole and tator tots. Micki and Jack Fenske made the delicious scramble eggs. We also had a variety of breads, muffins and fruits. I would like to thank the following for helping set up, decorate and clean up. Jack & Micki Fenske, Bob Behr, Ron and Cheryl Franklin, Kelly Boyer, Pat Webb, Carol Carney, Eric Linblade. Thank you to all the servers. A special thank you to Corey Anderson and Eric Linblade for doing the dishes. Also thank you Michael Schell for the Easter Breakfast article.

THANK YOU!

A REMARKABLE ALL MEMBERS WORK DAY

Despite a gloomy, raining day, about 40 members participated in the spring All Members Work Day that was held on Saturday morning, April 8, 2017 – the largest Work Day turn out in recent history!

It was a very busy and successful Work Day. The Worship and Music Board also designated this morning to decorate and clean the sanctuary to prepare and beautify the sanctuary for Holy Week. In addition (and a real treat), W-ELCA graciously provided lunch for all the hungry Work Day workers. These two parallel events greatly enhanced the success of this Work Day. Thank you to the Worship and Music Board and W-ELCA.

The Work Day tasks were actually accomplished over two days. On Friday, Bruce Kiser and “crew,” consisting of Karen, granddaughter Adalyn, and Lucy Orcutt, cut palms branches, cleaned gutters, and powered washed the brick courtyard between the sanctuary and office. On Saturday, the Work



to the trash bin, washed windows, cleaned the Linfor memorial fountain, hung a large Easter banner, and other chores, all to beautify the facilities for Easter. The only disappointment was that the rain prevented spraying Round Up on unwanted vegetation in planting and pavement areas.

The Property Board thanks all who participated in the April 8 All Members Work Day. The list is long, but we would be remiss not to name the participants.

Carolyn Andrews
Samantha Basquez & son Kelly Boyer
Ben Briel
Carol & Jerry Carney
Jack Fenske
Dorothy Haney
Mary Francis Harris
Triss & Pastor Carl Hoppman
Holly Hoppman
Marlene and Duane Kiser
Karen & Bruce Kiser & granddaughter Adalyn
Eric Linblade
Karen Linfor
Joel Linfor
Chona Sison & Paul Maki
Peggy & Al Moser & son Joshua
Ofelia Ojeda
Lucy Orcutt
Connie Reule
David Saxby
Lois Sherrets
Faith Thomas
Laura Tice & daughter Alyana
Pat Webb
Gail Weber
Jacob Wilson
Jacquell Wilson-King & son, Daniel
Worship & Music Board members
W-ELCA members

If we missed anyone, our apologies.

The next All Members Work Day is in the fall and is scheduled for October 21. Mark your calendars. All are encouraged to assist, if able. And again, thank you to those that participated in the April 2017 Work Day.

SOCK DRIVE

Community Concerns is having their first annual Sock Drive! Clean out your sock drawer and bring your gently used socks (no holes please) and/or any new socks to church during the month of May and add it to the designated bin in the Narthex. Your donations will be used to help serve the homeless through the various projects our church is involved in. Please help support this wonderful drive and make our first year a great success!



NEW SECRETARY

Thank you to everyone for their kind words as I'm stepping down from this position, and for your help and encouragement while I've worked here. It's so nice to feel appreciated and loved. I've thoroughly enjoyed working here; it's a wonderful environment, and it's such an incredible privilege to support a church I'm proud to be a part of. This job has been a true blessing for me, and for Lucy, too—many thanks to those of you who let her tag along and help out around the church. I'm very happy to begin a new chapter in my life with a new baby.

I will still be quite involved at St. Luke's, too, as head of the Education Board, on the Church Council, and helping with several outreach projects. I'm excited to see the future unfold both at church and at home!

The new secretary is Rochelle Jaeger—please give her a friendly welcome and help her feel at home in her new position.



COUNCIL MEETING MINUTES

Drafts of the minutes from the Council Meetings are available in the office, posted on the bulletin board. They will be updated every month after the council meets. They are also available on the church website at <http://slelca.org/resources>.



PRAYER CONCERNS

A prayer concerns sheet is available in the Narthex on the Opportunity Table. Please feel free to write down any prayer requests you want to share with our congregation. Pastor Carl will include them in the prayers during the service.



WEDDING ANNOUNCEMENT

Congratulations to Michael & Maria Schell on their beautiful wedding on Saturday, April 22, 2017!



ALTAR FLOWERS

ALTAR FLOWERS

May 7	<i>Needed</i>
May 14	Lauren & John Caleb Orcutt For Lucy's 9th Birthday
May 21	<i>Needed</i>
May 28	<i>Needed</i>



MAY BIRTHDAYS

BIRTHDAYS

Kelly Boyer	May 2
Ryan Edwards	May 4
Jeremy Roberts	May 4
Jennifer Petersen	May 8
Dave Barr	May 9
Katie Iniguez	May 9
Lucy Orcutt	May 14
Victoria Diaz	May 15
Tracy Etchison	May 16
Debi Lentsch	May 17
Brenda Sulzmann	May 18
Alison Thomas	May 18
Samantha Basquez	May 19
Carole Edwards	May 21
Claire Kerian	May 23
Nancy Minning	May 26
Kennedy Moser	May 27
Carol Carney	May 30
Dorothy Haney	May 30
Justin Tice	May 30
Duane Reule	May 31



BLESSINGS
ON YOUR
BIRTHDAY

Meyer Memorial Committee Project List

Prioritized by Committee, Approved by the Congregation

The Meyer Memorial Committee was comprised of the following members: Holly Hoppman (chair), Bob Behr, Paul Maki, Jack Fenske, Carole Vance, Nancy Minning, Connie Ruele, Carolyn Andrews, Lauren Orcutt, Karen Linfor
 On April 23, 2017 the congregation approved the committee's recommendation that the following projects be completed in the order below until the Meyer Memorial fund is depleted. The First item (paying off the mortgage) has already been approved by the congregation at the Annual meeting in December and has been completed.

Priority	Category	Location	Estimated Cost	Description
1	COMPLETE	CHURCH	\$44,892	Pay off mortgage
2	Benevolence	St. John's Program for Real Change	\$3,550	Benevolence support for St. John's Program for Real Change. They support real change in the lives of homeless women and their children and to help break the cycle of poverty and dependence one family at a time.
	Benevolence	Elk Grove Food Bank	\$3,550	Benevolence support of two of Elk Grove Food Bank's programs: one to support a senior population through a meal and nutrition supplements and to support a new CRC food pantry specifically serving the 95823 zip code that includes a Pet Pantry.
	Benevolence	Chicks in Crisis	\$3,550	Benevolence support for Chicks-in-Crisis that serves new teen mothers and fathers, pregnant teens, and their families. Chicks in Crisis is a non-profit 501(C)3 organization based in Elk Grove, California offering adoption, parenting and educational services.
	Benevolence	Valley Hi Family Resource Center	\$3,550	Benevolence support for the Valley Hi Family Resource Center; they provide a variety of services and programs to some of the most vulnerable children and families in our local community. This would sponsor the following projects: Upcoming Health Fair; Diapers, Wipes, Formula; Aide to Family Day; and Safety Items.
3	Property Improvement	Sanctuary	\$38,500	Move pews, abate tile, refloor sanctuary with carpet and tile
4	Property Improvement	Overflow/Choir Room	\$10,600	Abate tile, refloor Overflow room with tile; refloor choir room.
5	Property Improvement	Kitchen	\$9,000	Replace commercial dishwasher in main kitchen, replace refridgerator in Schultz Hall Addition kitchen with stackable fridge and freezer units, replace refridgerator in Room 5 with side by side fridge/freezer combo.
6	Outreach	Mailers	\$5,000	An opportunity to reach out to the community through mailing out 10,000 postcards through mailing house prior to Christmas and Easter holidays in an effort to raise attendance during the high holidays of the church.
7	Outreach	Office	\$7,500	Replace Carillon bell machine.
8	Property Improvement	Sanctuary	\$10,000	Replace sliding glass doors on east side of sanctuary to improve security.
9	Property Improvement	Sanctuary	\$12,500	Install 14 foot screen and projector system for sanctuary.
10	Property Improvement	Sanctuary	\$10,000	Modify Southwest choir exit door.

FINANCIAL SECRETARY REPORT

March 2017

Comments:

- March was not a good month for offerings.
- Offerings for March were below Budget (-16.5%) and below last year's March offerings (-3.4%).
- The number of contributors was also down in March; however, Easter was in March last year and is in April this year.
- March was five Sundays in 2016; four Sundays this year.
- The "Year To Date" offering totals are also disappointing in this report.
- With faith, the offerings will bounce back in April, which has Easter and five Sundays.
- Please use numbered envelopes, when feasible. Thank you.
- If you need numbered envelopes, either see me or drop a note in the offering.
- When using pew envelopes, please write legibly. Thanks.
- If you have any questions or suggestions, please do not hesitate to contact me.

Jack Fenske
 St. Luke's Financial Secretary
 916-714-3626
LRFenske@comcast.net

General Fund (Only) Contributions			
Data	This Month	Year to Date	
Total Contributions	\$18,102	\$51,527	
Compared to Budget	-\$3,567	-\$6,024	
	-16.5%	-10.5%	
Compared to 2016	-\$644	-\$2,214	
	-3.4%	-4.1%	
No. of Contributors			
2017 (Current Year)	93	85	avg.
2016 (Last Year)	105	92	avg.
Other Special Gifts			
Sunday School		\$28	
Flowers		\$160	
Memorials		\$300	
Special Gift (Pastoral Assistance)		\$55	
Soup Suppers		\$189	
Easter Lilies		\$160	
Crab Feed (Donations)		\$150	

Note: Plus values are good; minus values are not.



WORSHIP ASSISTANTS

Altar Care

(8:15 a.m.) Cheryl Franklin
(10:30 a.m.)
May 7 Mary F. Harris, Karen Linfor
May 14 Connie Ruele
May 21 Kelly Boyer, Lydia Toloy
May 28 Lisa Olsen

Communion Servers

May 7 Kelly Boyer, Peggy Moser,
Connie Reule
May 21 Bob Behr, Mary Frances Harris,
Lydia Toloy

Counters

May 7 Nancy Minning, Connie Reule
May 14 Don Schell, Bob Behr
May 21 Betty Englund, Barbara Manlapig
May 28 Holly Hoppman, Marlene Kiser

Greeters

May 7 *Needed*
May 14 *Needed*
May 21 *Needed*
May 28 *Needed*

Head Ushers

8:15 a.m. Ron Franklin
10:30 a.m.

Prayer Leaders

May 7 Triss Hoppman
May 14 Marlene Kiser
May 21 Sylvia Kohler
May 28 Ken Lentsch

Psalm Leaders

May 7 Angie Martinez
May 14 Lucy Orcutt
May 21 Aiyana Tice
May 28 Sierra Etchison

Readers (8:15 a.m.; 10:30 a.m.)

May 7 Ron Webb; Kelly Boyer
May 14 Christiana Wilson; Larry Dockter
May 21 Eric Linblade; Betty Englund
May 28 Sarah Madison; Tracy Etchison

Refreshments

May 7 Ed & Kirsten Ireton
May 14 Marc & Alison Thomas
May 21 Paul Maki & Chona Sison
May 28 Kelly Boyer & Lois Sherrets

Visitors' Gifts

May 7 Linda Olsen
May 14 Pat Webb
May 21 Carol Carney
May 28 Carole Vance

Acolytes

May 7 Darnell Osako, LaRayna Osako-Cain
May 14 Aiyana Tice
May 21 Amber Mansfield, Angie Martinez
May 28 Lucy Orcutt, Kimiya Ricciardi

Welcome Leaders

May 7 Kelly Boyer
May 14 Pat Webb
May 21 Chet Madison
May 28 Lydia Toloy

Sunday School Teachers

May 7 Lauren Orcutt, Christina Hisamoto
May 14 Laura Tice, Samantha Basquez
May 21 Alison Thomas, Lajuan Andrews
May 28 Samantha Basquez, Laura Tice

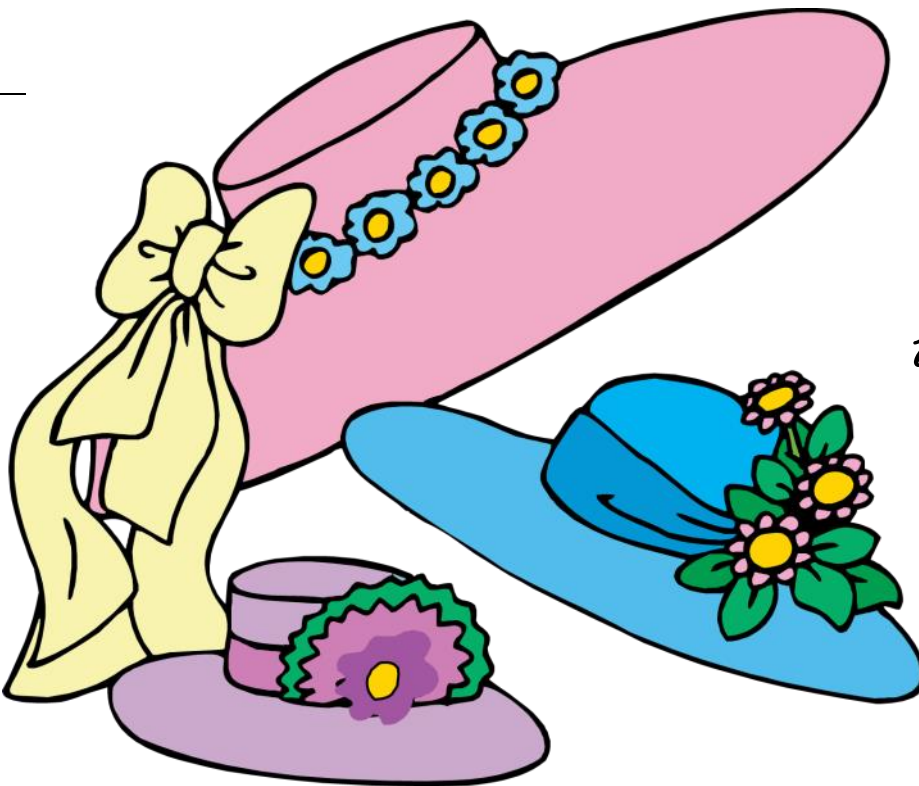


St. Luke's Lutheran Church
7595 Center Parkway
Sacramento, CA 95823

Return Service Requested

Non-Profit Org.
U.S. Postage Paid
Permit No. 739
Sacramento, CA

«Label Name 1»
«Address Line 1», «Address Line 2»
«City», «State» «Zip Code (5-digit)»



*Wear a Hat
for Mother's Day!
May 14, 2017*