



St. Luke's Lutheran Church
 (916) 421-5039
www.slelca.org
office@slelca.org
 Interim Pastor Bill Wessner
PastorBillSLelca@gmail.com



2022



Pastoral Perspective

Here comes Lent. Our Season of Light: Epiphany is now in transition to the Season of Lent. By the time you are reading this Shrove Tuesday or Mardi Gras and Ash Wednesday will be upon us. Yes, we will be having In Person Services at the church this year. They will be 30-minute services from 6pm until Choir Practice at 6:30. This will be the case all season beginning with March 2 for Ash Wednesday. Yes, we will Live Stream the same as with Sunday Service with YouTube Links, emailed, displayed on our website, and posted on Facebook.

As we, a congregation, make this transition in the Church Year Season, we continue to make a transition toward our new Pastor. The work of the Transition Team is now complete, our Ministry Site Profile, MSP is ready for Council Approval. This should happen Monday night February 28th along with the naming of our Call Committee. Working with our Synod, the Call Committee will be interviewing candidates for the position we have described in the MSP (our resume). We need to thank our Transition Team, Marlene Kaiser, Peggy Moser, and Jack Fenske, for completing this task so skillful. They were able to listen to your input from the three surveys, assemble your visions and expectations, compile specific input from many designated writers, and express the status and mission

of St. Luke's in such a way our Synod and our Pastor to be, will be able to understand how Jesus is at work in this congregation and through us into the community.

The Call Committee's task it to interview the Candidates presented by our Synod, to discover the best possible intersection of who we are, who we are called to be, and the faithful heart of that next Pastor. Your prayers are imperative along with your respect for the private nature of the detail of our Call Committee's work.

It is a time of transitions. Indeed transitions abound. As Americans we are moving from Pandemic to "Endemic" (keep praying). As disciples of Jesus and citizens of the world, we have much to offer for the care of our neighbors near and far. As people who live in a land not consumed by war, we are invited to demonstrate how differing people create harmony. How people of different histories, customs, cultures, perspectives, can form enough of a vision for a common future that all may live in peace.

With all this on our shoulders, maybe it is good we are starting a season of reflection of our faith.

Come and See

Peace *Pastor Bill*



The joint Mission Project for Community Concern and W-ELCA in March is for My Sister's House. This organization in Sacramento serves Asian and Pacific Islander and other underserved women and children impacted by domestic violence, sexual assault, and human trafficking by providing a culturally appropriate and responsive safe haven, job training, and community services.

<https://www.my-sisters-house.org>

We are gathering through the month of March the following items: Baby lotion, Baby powder, Baby shampoo, Baby wipes, Body wash, Diapers (all sizes), Sanitary pads, Face moisturizer/sunscreen, Medicine (unused-cold/flu medicine, allergy, aspirin, cough,, etc.),



Unused beauty products, Facial tissues, Women's business attire—new and gently used, New house slippers, Lightly used purses, handbags, backpacks, Vintage items.

Donations can be placed in the donation box in the church narthex.

Thank you in advance for your support in this Mission Project.

Yours in Christ Love,

Linda Duffek, Cathy Davis & WELCA

Worship & Music Board Minutes of February 5th, 2022

At the regular meeting held on February 5, 2022, the Board discussed preparations for the Lenten Season, which begins with Ash Wednesday, March 2, 2022. During Lent, all services will be held in the Sanctuary at 6:00 pm and conclude at 6:30 pm, in order to not interfere with choir practice scheduled at 6:30 pm. Those include Wednesday evening services during Lent, Maundy Thursday, and Good Friday. The altar will be stripped during services on Maundy Thursday.

Palms will decorate the Church on Palm Sunday. A work day to clean all elements used during services is scheduled for April 9th, and palms will also be placed at that time.

Lilies have been ordered to decorate the Sanctuary and the Cross on Easter Sunday. If you would like to donate \$15.00 toward the purchase of an Easter Lily in honor of, or in memory of someone, forms will be available in the Sunday bulletins, beginning March 13th. The plants can be picked up following the Easter service.



Lenten Devotionals have arrived, and will be available on the tables in the back of the Sanctuary.

If you are interested in helping in any way, please let me know. "Our Hands, God's Work."

Just a reminder – it is NEVER TOO LATE to join Choir!

In Christ's Love,

Shirley Prouty, Chair

Just a Reminder—Its is NEVER TOO LATE to join the Choir!



Corey Anderson	March 01
Selena Connell	March 05
Elizabeth Brasier	March 06
Jennifer Connell	March 06
Karen Richey	March 06
Renee Roberts	March 06
Laura Tice	March 07
Kevin Kiser	March 09
Jesse Jaeger	March 12
Donna Ben-lesau	March 13
Ron Petsch	March 13
Sarah Thomas	March 13
Sarah Madison	March 16
Mackenzie Harrison	March 17
Addison Jaeger	March 19
Manny Menezes	March 21
Irma Lowe	March 23
David Saxby	March 23
Conner Ricciardi	March 24
Amelia Tice	March 24
Katie Light	March 25
Bob Harrison	March 26
Lilia Karlstad	March 27
Karen Kiser	March 28
Patricia Lehman	March 29
Bob Behr	March 30
Kelly Sobkowsky	March 30

FINANCIAL SECRETARY'S REPORT

January 2022

Comments:

- A new year and a great start; contributions exceeded the Budget! Thank You.
- The celebration should be tempered somewhat, as a generous offering was received that is likely not to be repeated every month.
- Remember the Budget is being subsidized by \$28,000 (\$2,333/month) from Reserves and the Fireworks proceeds.
- The number of unique, monthly contributors remained steady from last year - encouraging news.
- Annual statements of contributions for 2021 have been distributed for all contributors. If you contributed in 2021 and did not receive a statement, please contact me.

Jack Fenske 916-714-3626, LRFenske@comcast.net
St. Luke's Financial Secretary

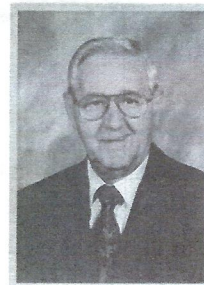
General Fund (Only) Contributions		
Data	This Month	Year to Date
Total Contributions	\$15,868	\$15,868
Compared to Budget	+\$2,533	+\$2,533
	19.0%	19.0%
Compared to 2019	+\$1,208	+\$1,208
	8.2%	8.2%
No. of Contributors		
2021 (Current Year)	54	54 avg.
2020 (Last Year)	54	54 avg.

Note: Plus values are above Budget/Last Year; minus values are below.

IN LOVING MEMORY

Alvin Boschee

July 16, 1929 - January 19, 2022



Safely Home

I am home in heaven, dear ones; All's so happy, all's so bright!
There's perfect joy and beauty in this everlasting light.
All the pain and the grief are over, Every restless tossing
passed; I am now at peace forever, Safely home in heaven at
last.

Did you wonder I so calmly Trod the Valley of the Shade, Oh,
but Jesus' love illumined every dark and fearful glade!
And he came Himself to meet me on the way so hard to tread;
And with Jesus' arm to lean on, could I have one doubt or
dread?

Then you must not grieve so sorely, For I love you dearly still:
Try to look beyond earth's shadows, pray to trust our Father's
will.

There is work still waiting for you, so you must not idly stand;
do your work while life remaineth- You shall rest in Jesus' land.

When that work is all completed, He will gently call you
home; Oh, the rapture of the meeting! Oh, the joy to see you
come!

Dear St. Luke's Family,

Thank you for all your prayers and cards during this challenging time. Your love and support will get us through this.

Thank you, Pastor Bill, for your guidance in planning the service. It was a beautiful service. Thank you, Jane, and Choir, for the Special music. A special thank you to Karen Linfor for leading us in song.

Comfort Committee, thank you for the amazing lunch you prepared. Many loving hands prepared this meal.

We know Al is with his Lord and Savior now. Rest in Peace, Al, Dad, Grandpa and Great Grandpa.

With Love, *Boschee Family*



Ash *Wednesday*

March 2nd, 2022

Evening Worship Service at 6:00pm

Join us every Wednesday evening during Lent season
for worship services.

6:00-6:30pm

This is your LAST

**St Luke Newsletter by Bulk
Mail. If you wish to receive one
by stamped mail please
contact the church office. We
will switch to email and—
website posting. Copies will be
available at the church.**